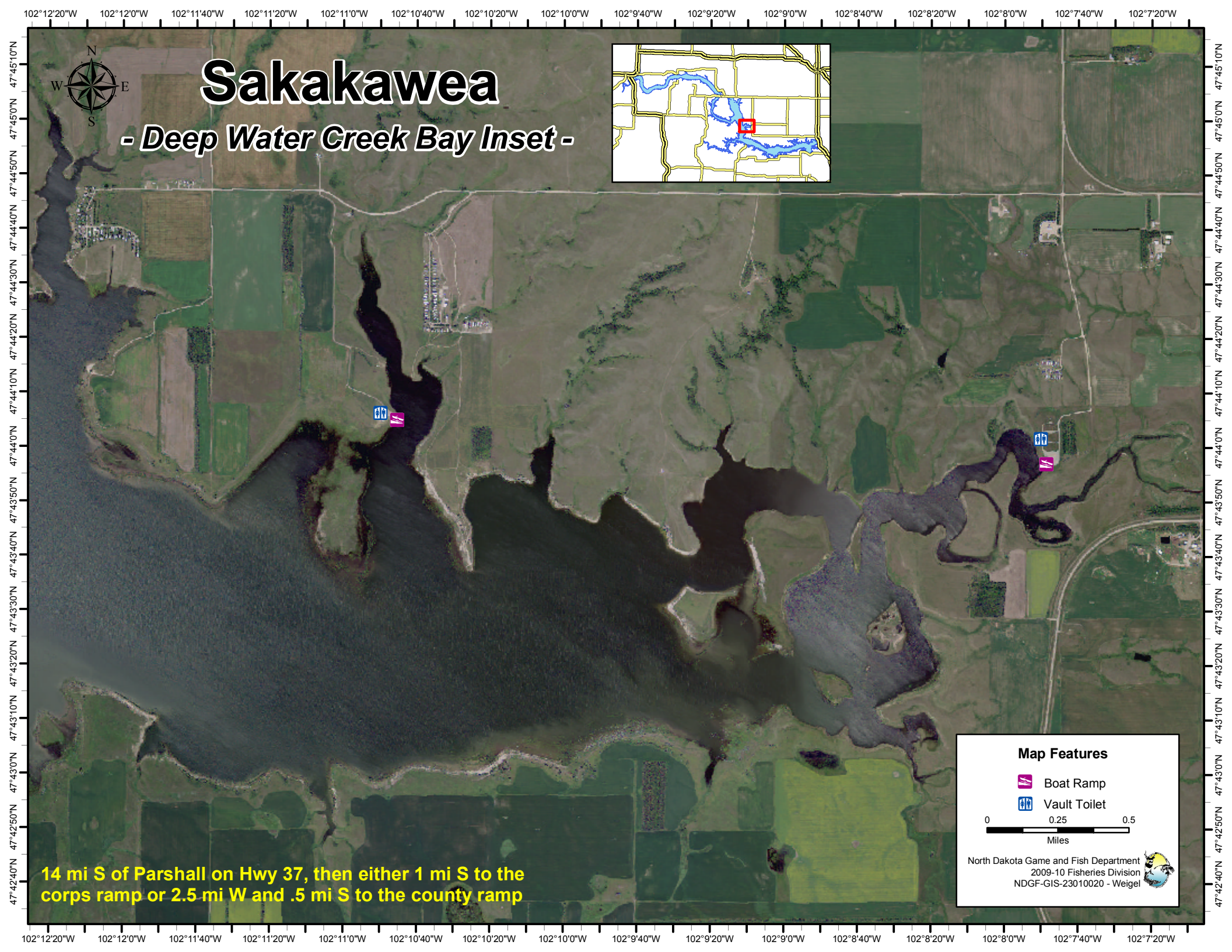
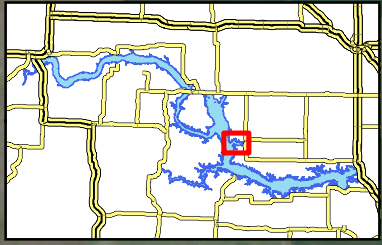






# Sakakawea

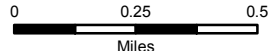
*- Deep Water Creek Bay Inset -*



**14 mi S of Parshall on Hwy 37, then either 1 mi S to the corps ramp or 2.5 mi W and .5 mi S to the county ramp**

### Map Features

-  Boat Ramp
-  Vault Toilet



North Dakota Game and Fish Department  
2009-10 Fisheries Division  
NDGF-GIS-23010020 - Weigel

