

100°33'55"W 100°33'45"W 100°33'35"W 100°33'25"W 100°33'15"W 100°33'5"W 100°32'55"W 100°32'45"W 100°32'35"W



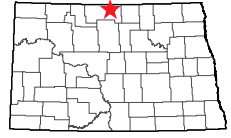
# Carbury Dam

*Bottineau County*

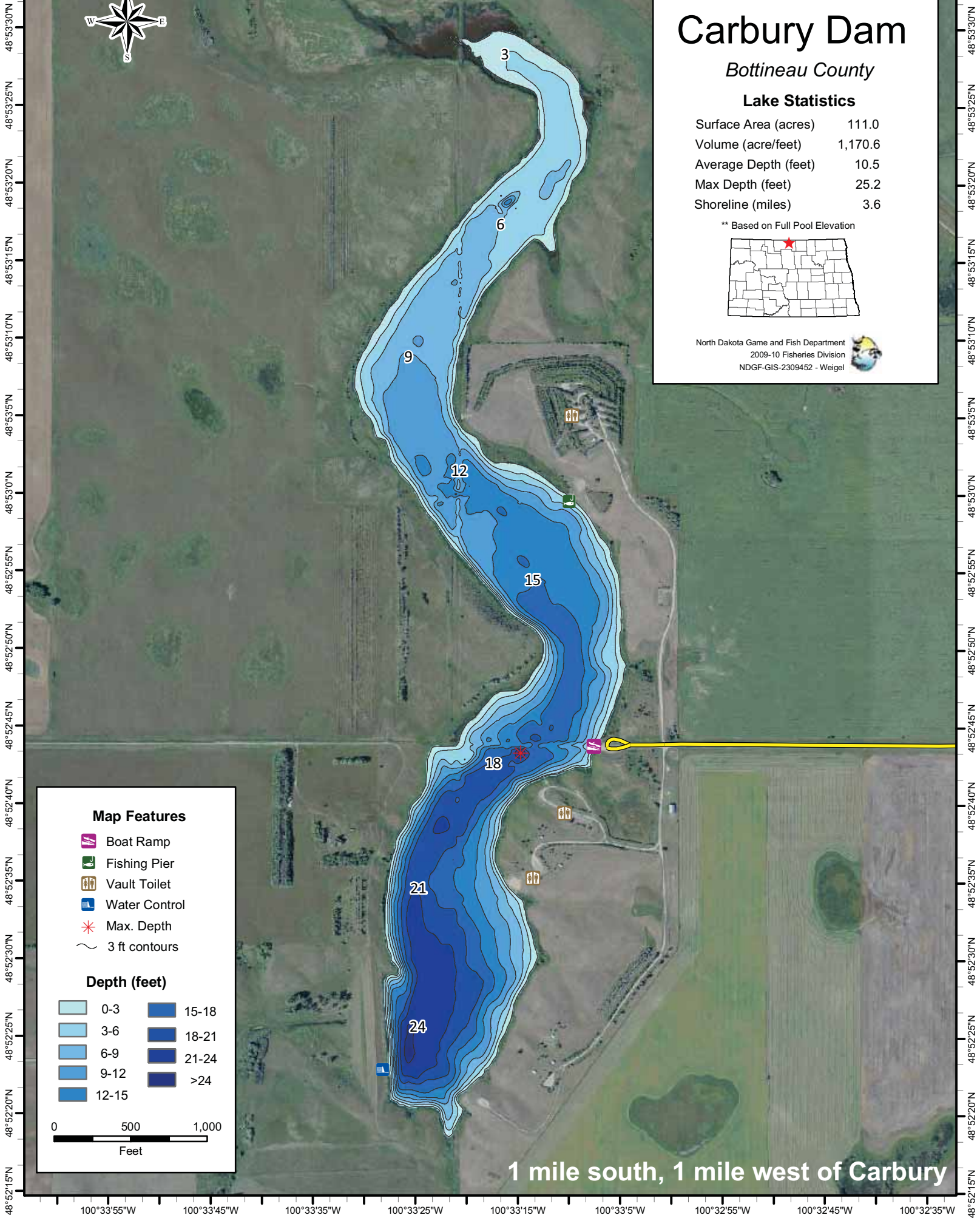
## Lake Statistics

Surface Area (acres)	111.0
Volume (acre/feet)	1,170.6
Average Depth (feet)	10.5
Max Depth (feet)	25.2
Shoreline (miles)	3.6

\*\* Based on Full Pool Elevation



North Dakota Game and Fish Department  
2009-10 Fisheries Division  
NDGF-GIS-2309452 - Weigel

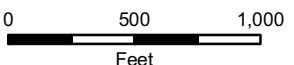


### Map Features

- Boat Ramp
- Fishing Pier
- Vault Toilet
- Water Control
- Max. Depth
- 3 ft contours

### Depth (feet)

	0-3		15-18
	3-6		18-21
	6-9		21-24
	9-12		>24
	12-15		



1 mile south, 1 mile west of Carbury

100°33'55"W 100°33'45"W 100°33'35"W 100°33'25"W 100°33'15"W 100°33'5"W 100°32'55"W 100°32'45"W 100°32'35"W